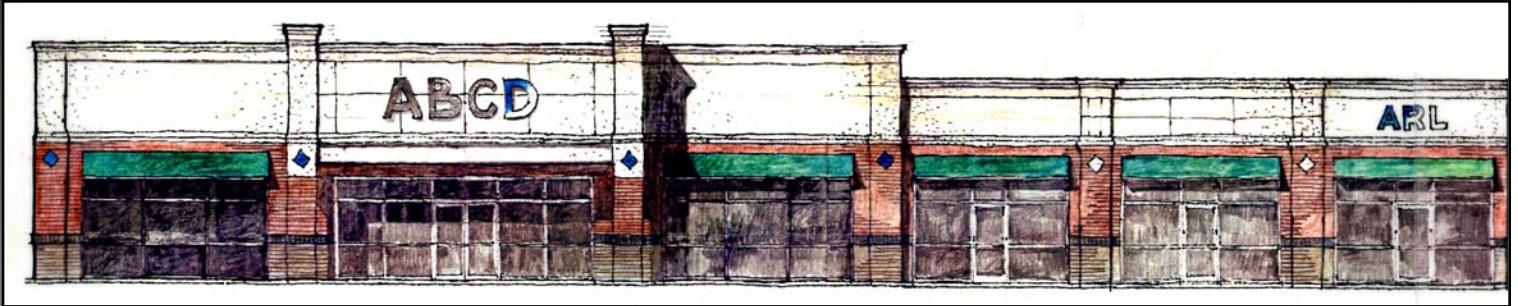


HUGHES BLVD. AND HALSTEAD LAND/RETAIL OPPORTUNITY ELIZABETH CITY, NORTH CAROLINA



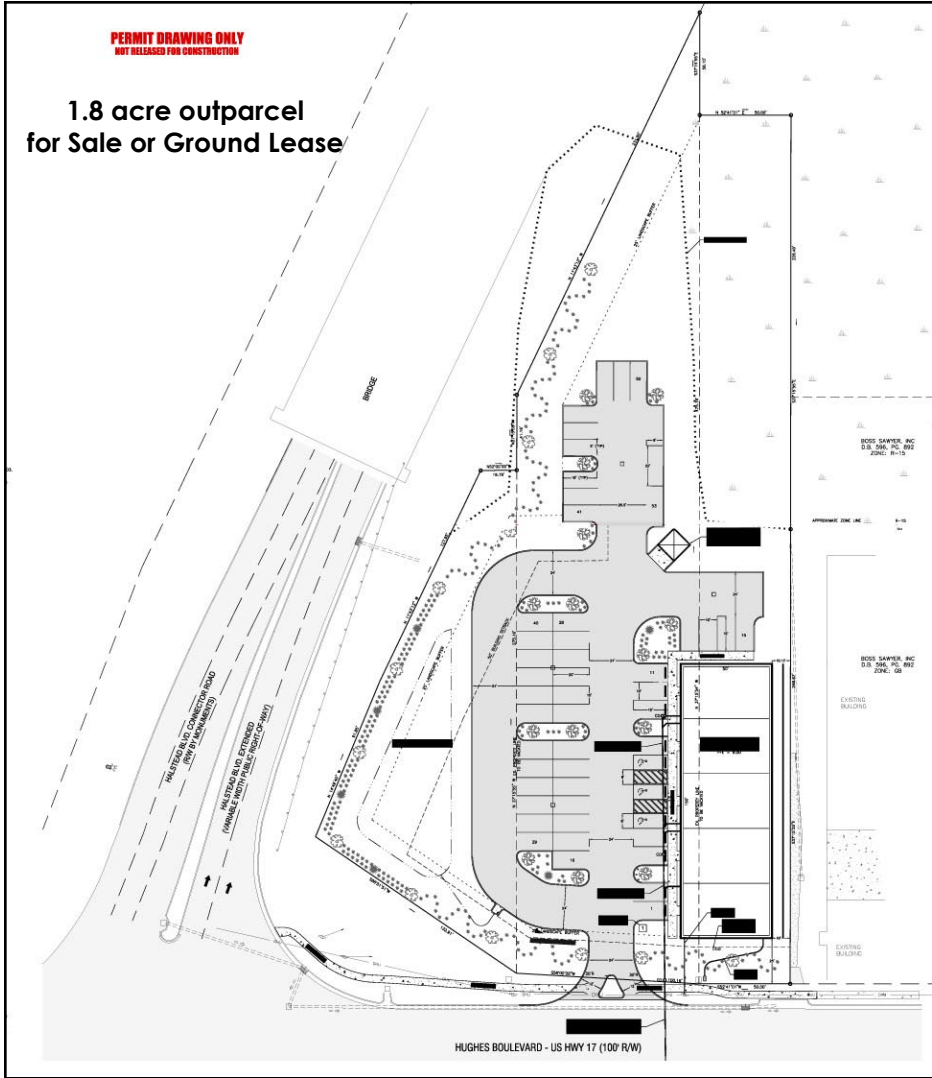
Prime Location at intersection of new Rt. 17 Connector and Hughes Boulevard in Elizabeth City



Brokerage with vision. Real estate with results.

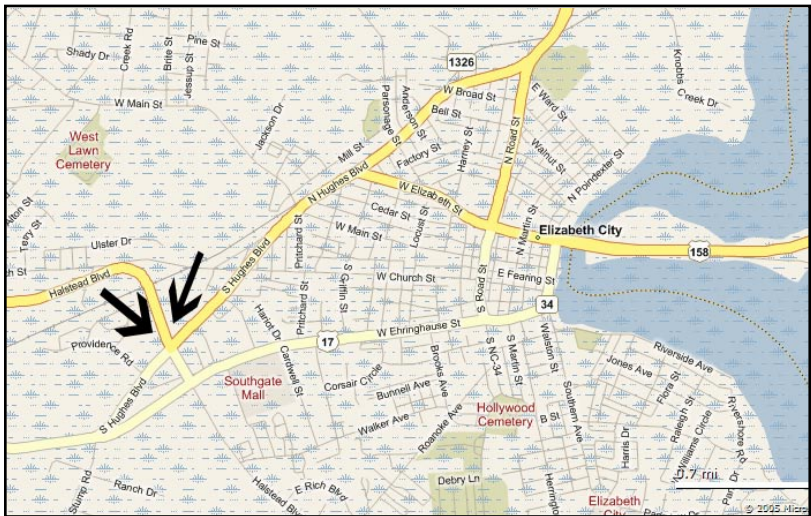


The information contained herein is believed to be accurate, but is not warranted and is subject to change without notice.



- Potential for 7,500 sf retail strip \$20/sf NNN or 1.8 acre outparcel for sale \$1.1 million (or \$85,000 ground lease per year.)

- 1.24 acre outparcel ground lease adjacent to new Ruby Tuesday \$75,000



512 S. Lynnhaven Road
 Virginia Beach VA 23452
 757 490-3595 info@katsias.com



Brokerage with vision. Real estate with results.