

2084 Princess Anne Road

Virginia Beach, VA • 23456

PROFESSIONAL OFFICE
FOR LEASE

Professional Office Park

LOCATION

- Located on Princess Anne Road near Sandbridge Road
- Minutes from Red Mill Commons and Strawbrige Market Place shopping centers, the Virginia Beach Court House, and Oceana and Dam Neck Naval Air Stations
- Located in a strong growth corridor of Virginia Beach

DEVELOPMENT

- 35,255 SF on 2.9 acres
- 135 parking spaces
- Zoned O-2
- Park-like setting with fountain and multi-purpose trail along Princess Anne Road

Availability

PHASE I: 12,895 SF Single-story Office Building

PHASE II: 22,360 SF Two-story Office Building

- Suites from 1,500 SF
- \$17.00 PSF, net of utilities
- Owner to provide tenant build-out based on a mutually agreeable floor plan
- Projected delivery of first quarter 2012



For more information, please contact:

John Katsias

john@katsias.com

(757) 285-8989



2901 S. Lynnhaven
Suite 340
Virginia Beach, VA 23452

Phone 757.490.3585
Fax 757.490.3676
www.katsias.com

2084 Princess Anne Road

Virginia Beach, VA • 23456

PROFESSIONAL OFFICE
FOR LEASE

Development Site Plan



For more information, please contact:

John Katsias
john@katsias.com
(757) 285-8989



2901 S. Lynnhaven
Suite 340
Virginia Beach, VA 23452

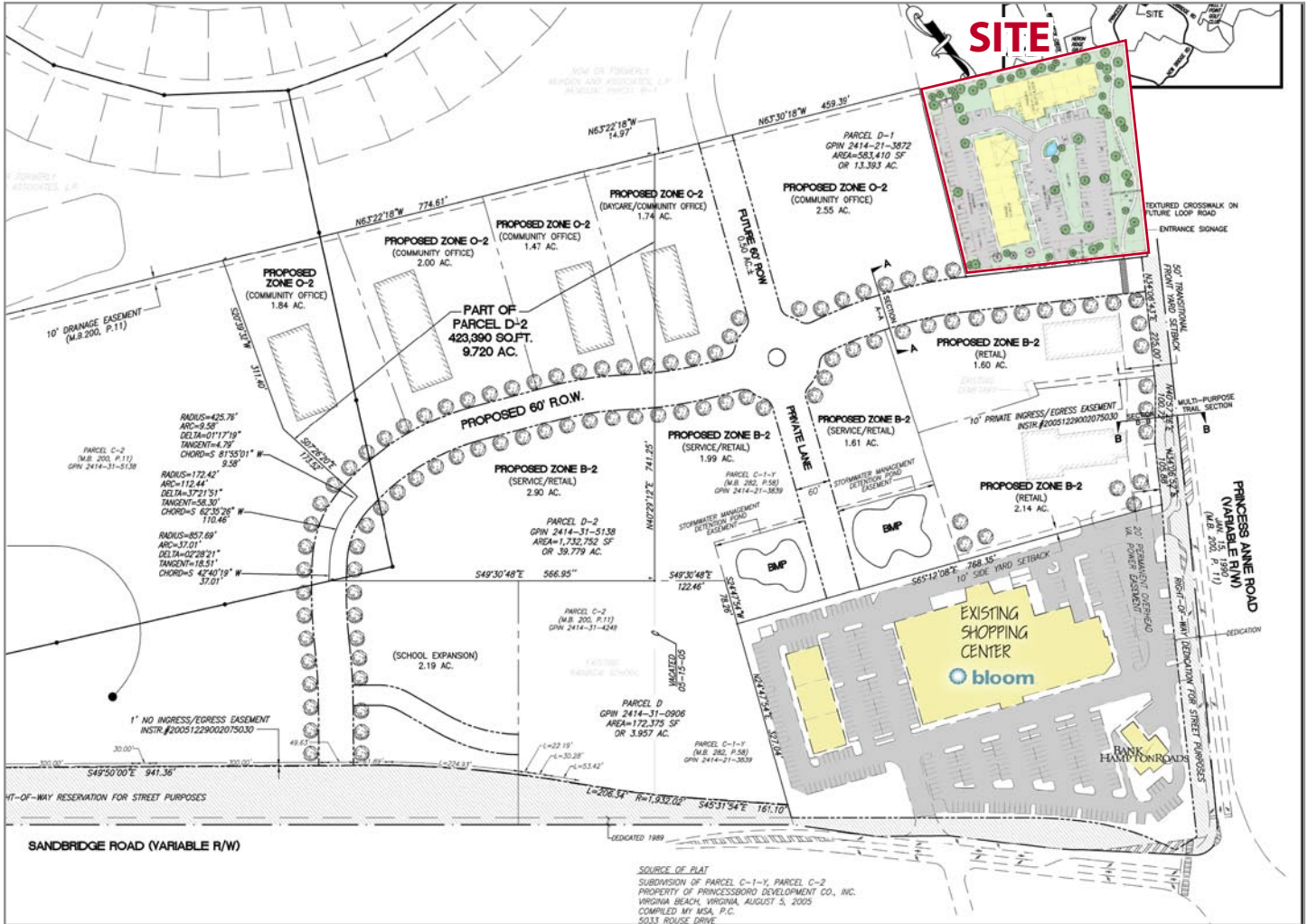
Phone 757.490.3585
Fax 757.490.3676
www.katsias.com

2084 Princess Anne Road

Virginia Beach, VA • 23456

PROFESSIONAL OFFICE
FOR LEASE

Adjacent Development Site Plan



For more information, please contact:

John Katsias
john@katsias.com
(757) 285-8989



2901 S. Lynnhaven
Suite 340
Virginia Beach, VA 23452

Phone 757.490.3585
Fax 757.490.3676
www.katsias.com